

THE SMART CHOICE  
FOR HEATING AND HOT WATER



RAPID

YEARS OF QUALITY,  
INNOVATION AND ECONOMY



INNOVATION  
PROVEN  
OVER TIME

INTERGAS HEADQUARTERS, THE NETHERLANDS



**INTERGAS®**  
BOILERS



## THE SMART CHOICE FOR HEATING AND HOT WATER

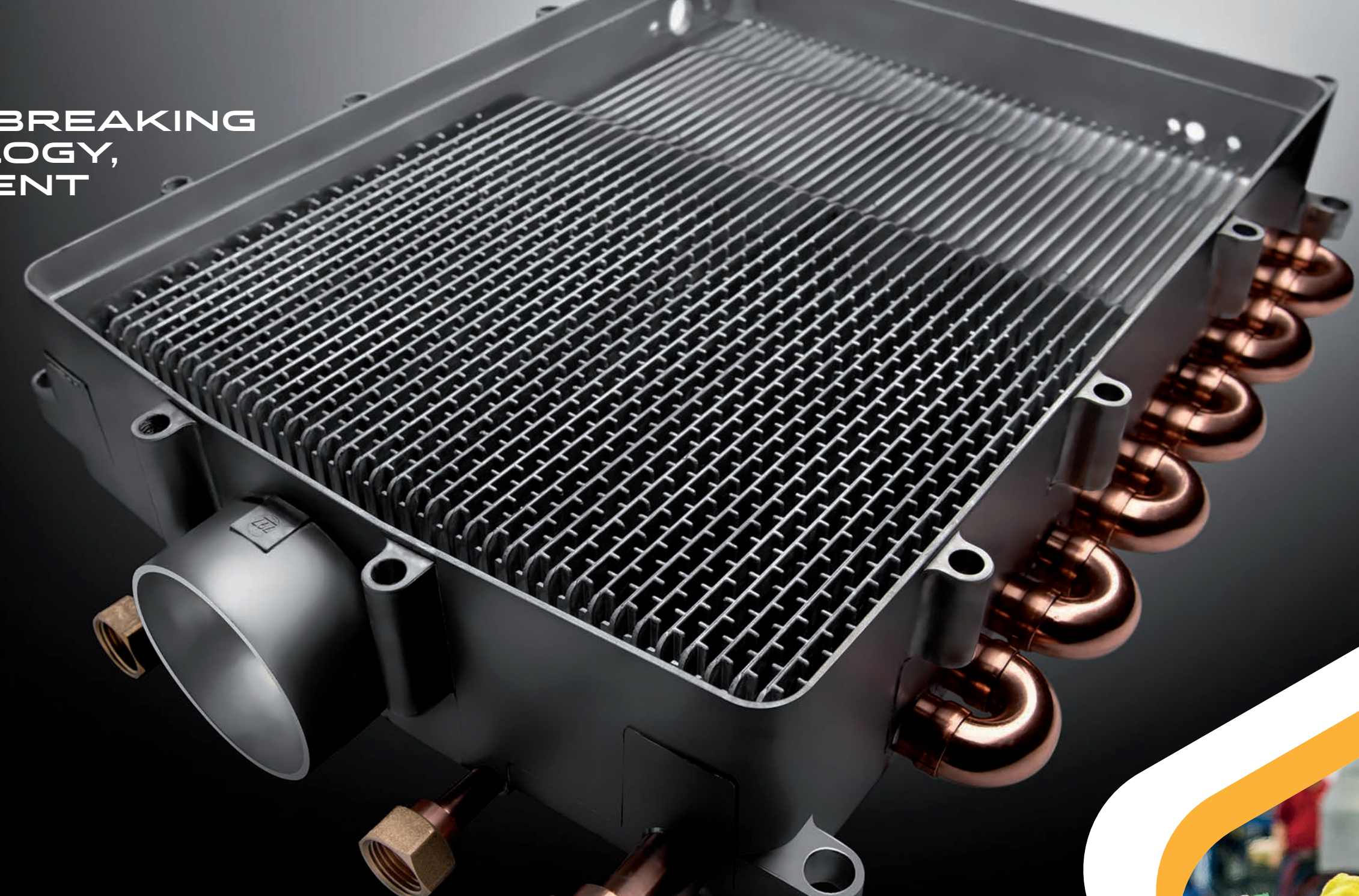
You may not be familiar with Intergas, but we hope that we can show why we're the brand leading boiler manufacturer in the Netherlands, our home country, and why you'll never regret going Dutch.

For over 50 years we've been pioneers in innovative boiler design but, in 1989, we developed the ultimate boiler. It was a completely new kind of condensing boiler, totally unique, one that was so simple yet advanced, it remains at the cutting edge of boiler technology today. What this means is that all our boilers have a maximum of four moving parts (some only have three) and, with fewer parts, there's less to go wrong. Then there's our bithermic heat exchanger, the heart of every boiler, which enables our boilers to condense virtually all the time, using less energy, lowering emissions and saving you money.

If you're looking for an efficient and economical boiler that will look after you, your family and the environment, then Intergas is the smart choice.



**GROUND BREAKING  
TECHNOLOGY,  
INTELLIGENT  
DESIGN.**



**BUILT TO LAST,  
GUARANTEED TO DELIVER**

Is anything built to last these days? Our boilers are because we only use the most robust materials. Take our heat exchanger, it's made entirely of aluminium and copper and is as reliable as they come. So reliable that each one inside our Rapid boiler has a 7-year warranty. But that's not all. Instead of having two separate heat exchangers, like the majority of manufacturers, ours is bithermic which increases the boiler's ability to condense over a longer period of time.

And finally, did you know that one of the biggest causes of boiler breakdown in the UK is a faulty diverter valve? Well, one of the best things about the Rapid combi is that it doesn't have one.





RAPID  
SMART IN EVERY SENSE



CUTTING-EDGE  
ENERGY  
EFFICIENCY



The Rapid combines high efficiency in both hot water and central heating modes too and our combi condenses virtually 100% of the time its producing hot water - an energy-saving feature that's hard to beat. By adding state-of-the-art controls, like the Intergas Comfort Touch OpenTherm thermostat or Wiser Kits, even more energy can be saved, while increasing your comfort.

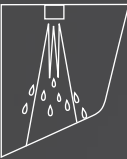
The Rapid is available in two power outputs 25Kw and 32Kw to suit most residential properties. The Rapid can easily be converted to open vent, open vent combi, system boiler and multipoint water heater by a simple change within the parameter settings.

*\* Please note, if you live in an apartment that's over 18 metres high, then you can only install a boiler that has a metal flue. The Rapid flue is made from aluminium and steel and was the first high-rise compliant boiler available in the UK when the Building Regulations changed in 2019.*

RAPID & RAPID PLUS 25 32



4 MOVING PARTS



FAST FLOW RATE

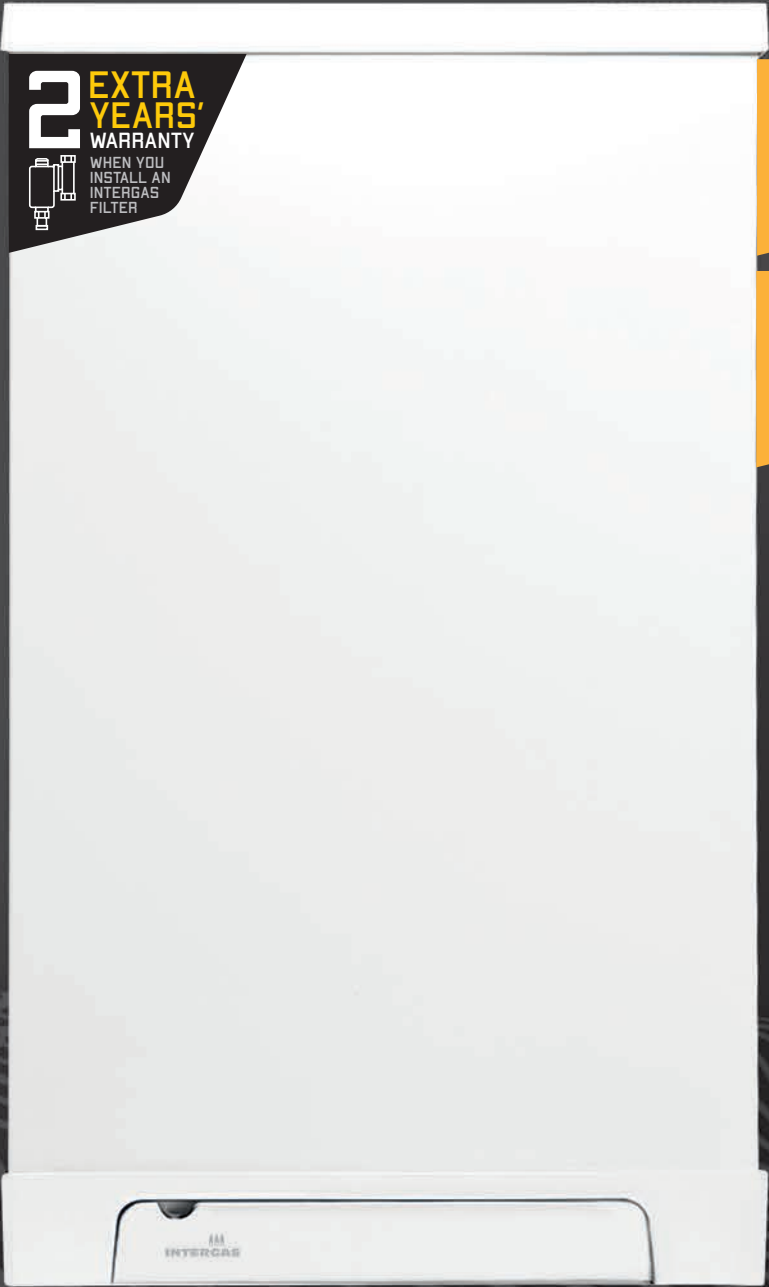


BITHERMIC HEAT EXCHANGER



FROST PROTECTION

2 EXTRA YEARS' WARRANTY  
WHEN YOU INSTALL AN INTERGAS FILTER



3 YEAR WARRANTY  
RAPID

6 YEAR WARRANTY  
RAPID PLUS

7 YEAR

HEAT EXCHANGER WARRANTY

HIGH EFFICIENCY

CONDENSES VIRTUALLY 100% DURING DHW

Choice of controls



COMFORT TOUCH



WISER KIT ONE



WISER MULTI-ZONE KIT ONE

RAPID & RAPID PLUS

SMART IN EVERY SENSE



Technical features

- > Central flue
- > Up to 10m flueing distance
- > Easy to service and maintain
- > LPG conversion available
- > Built-in programmer
- > Exceptional flow rate
- > Priority domestic hot water (additional set up required)
- > Spacer frame
- > High-rise compliant
- > Combined PRV and condensate

Five-in-One boiler

- > Combi
- > Open vent
- > System
- > Open vent combi
- > Multipoint water heater

EFFICIENCY RATINGS



RAPID & RAPID PLUS

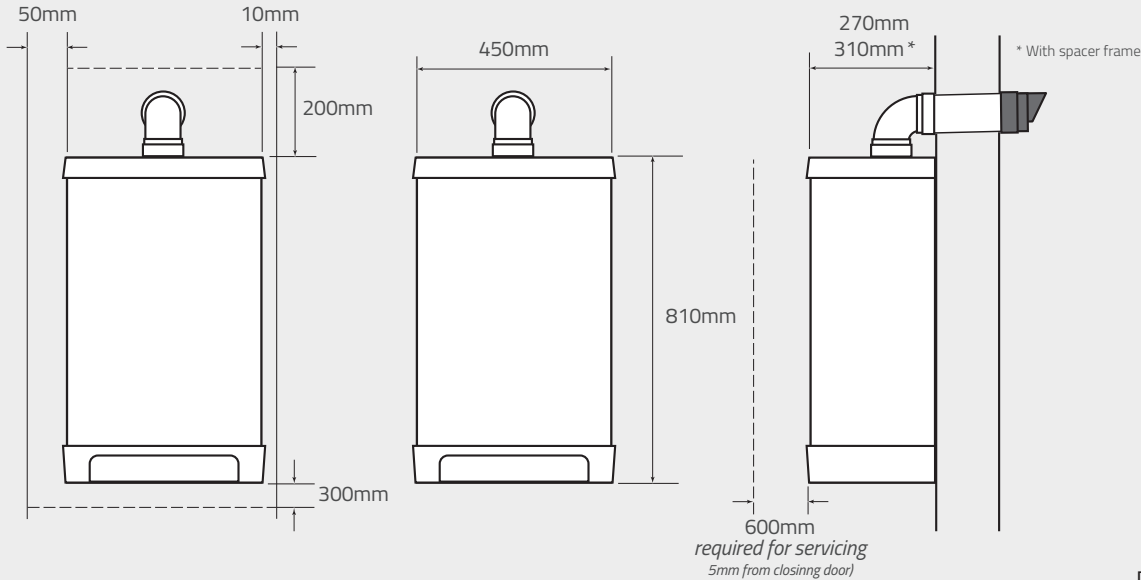
25

32

Heating rated output	kW	25	32
Safety class	IP	IP44	IP44
NOx class		6	6
NOx level	mg/kWh	36.33	46.08
Domestic hot water			
Nom. load input rating	kW	7.1 - 29.1	7.6 - 32.7
Min. DHW flow rate	ltrs/min	1.5	1.5
ΔT 25°C	ltrs/min	16.6	18.7
ΔT 35°C	ltrs/min	11.8	13.3
Domestic hot water temperature (default)	°C	55	55
Load profile		XL	XL
Energy efficiency rating class		A	A
Central heating			
Nom. load (Gross)	kW	7.1 - 25.7	7.6 - 32.7
Nom. load (Net)*	kW	7.1 - 23.15	7.6 - 29.45
Rated power*	kW	7.7 - 25.1	8.2 - 31.9
Max. central heating water pressure	bar	2.5	2.5
Max. central heating water temperature	°C	90	90
Energy efficiency rating class		A	A
Additional data			
Solar compatible		yes	yes
Seasonal heating energy efficiency class		A	A
Heat rated output (power)	P rated kW	25	32
Seasonal heating energy efficiency	ηs %	93	93
Annual energy consumption	QHE GJ	75	96
Sound power level	LWA dB	50	50
Water heating energy efficiency class		A	A
Water heating energy efficiency	ηWH %	87	87
Annual electricity consumption	Aec kWh	20	21
Annual fuel consumption	Afc kWh	4766	4774

\* The CH output is factory set to 70% of the maximum capacity.  
Technical specifications subject to change.

CLEARANCES & DIMENSIONS







Horizontal packs



Vertical packs

**3**  
YEAR  
WARRANTY

### Rapid Pack

Rapid 25 **049917H**

Rapid 32 **049927H**

**6**  
YEAR  
WARRANTY

### Rapid **PLUS** Pack

Rapid 25 **049937H**

Rapid 32 **049947H**

#### ALL PACKS INCLUDE

Rear Spacer Kit **093797**

1000mm Horizontal Straight Non  
Telescopic Wall Terminal Kit  
*including bend & wall cuff* **083442**

Valve Set **950417**

**3**  
YEAR  
WARRANTY

### Rapid Pack

Rapid 25 **049917V**

Rapid 32 **049927V**

**6**  
YEAR  
WARRANTY

### Rapid **PLUS** Pack

Rapid 25 **049937V**

Rapid 32 **049947V**

#### ALL PACKS INCLUDE

Rear Spacer Kit **093797**

Vertical Roof Terminal 60/100 **086838**

Vertical Adaptor **086807**

Valve Set **950417**

## Accessories & Flues

LPG Conversion Kit Rapid 25 & 25 PLUS **076067**

LPG Conversion Kit Rapid 32 & 32 PLUS **076077**

Rear Spacer Frame **093797**

Valve Set **950417**

Vertical Roof Terminal 60/100 **086838**

Vertical Adaptor **086807**

Horizontal Straight Non Telescopic Wall  
Terminal Kit (incl. bend & wall cuff) **083442**

Flue Extension 60/100 (1000mm) **086649**

Elbow 43-45° 60/100 **087616**

Elbow 87-90° 60/100 **087617**

Weather Slate (Flat Roof) **087372**

Weather Slate (Pitched Roof) **087910**

Outside Weather Sensor **203207**

PMK Set **083445**

PMK Extension (1000mm) **082055**

PMK Bend 45° **082056**

PMK Bend 90° **082057**

**3**  
YEAR  
WARRANTY

**6**  
YEAR  
WARRANTY

All parts in the Rapid boiler are easily accessible as the boiler case is removed from the front and, with the built-in expansion vessel, there is no need to use a jig. Intergas provides a 3-year parts and labour warranty on the Rapid and a 6-year warranty on the Rapid Plus.

\*warranties subject to terms and conditions

**2**  
EXTRA  
YEARS'  
WARRANTY

WHEN YOU  
INSTALL AN  
INTERGAS  
FILTER



## ENJOY EXTRA PEACE OF MIND

### Intergas System Filter for a healthy central heating system

Debris in the water can severely affect the performance of your central heating system and that's why an in-line filter must be fitted when the boiler is installed. In partnership with Fernox, we have developed the Intergas System Filter, which prevents contaminants from the system entering the boiler. Our filter will not only help to optimise the energy efficiency and longevity of the whole central heating system, it will also add an additional two years to the boiler's warranty.

Made from nickel-plated brass and stainless steel, this filter is not only 100% recyclable, it's built to last. Just like our boilers.

**INTERGAS®**  
**BOILERS**

**Intergas Heating Ltd**

Unit 2 Easter Park  
Worcester Road  
Kidderminster  
Worcestershire DY11 7AR  
01527 888000  
info@intergas-heating.co.uk

**WWW.INTERGASHEATING.CO.UK**

*The information in this brochure was correct at the time of going to print. Intergas Heating reserves the right to make any modifications to product specifications or any other details, without prior notification. For further clarification, please enquire in writing to the head office address below.*



Member of the Rheem® family