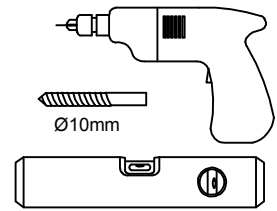
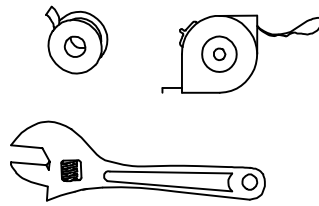
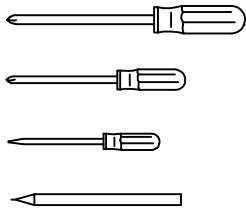


Duke Chrome Towel Radiator

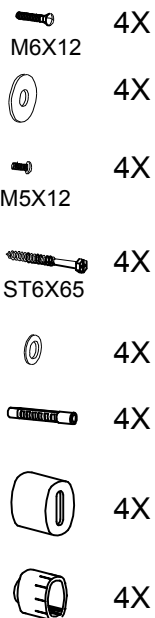
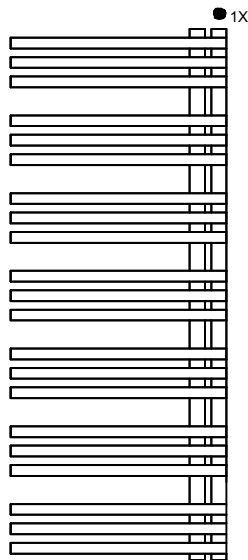
Installation Instruction

1-2

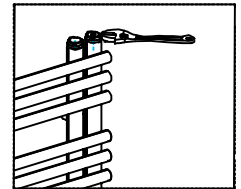
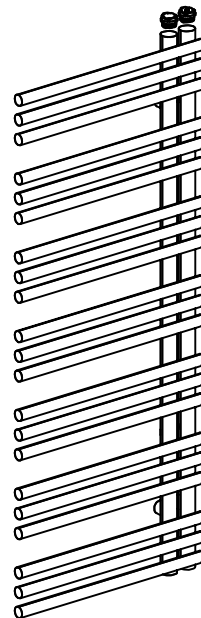
tools required



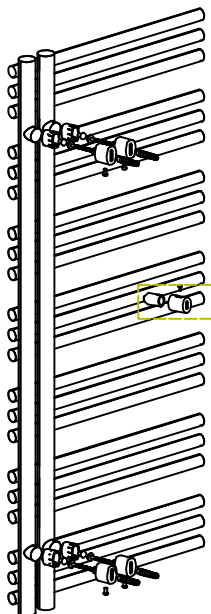
- SKU: DUK510CH DUK512CH
- review instructions carefully before installation
- installation should be completed by a suitably qualified person
- please dispose of packaging in a responsible manner



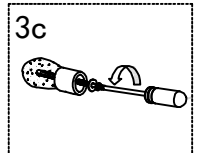
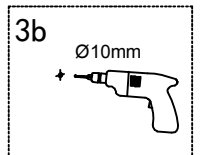
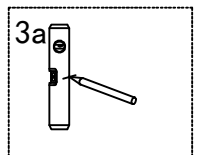
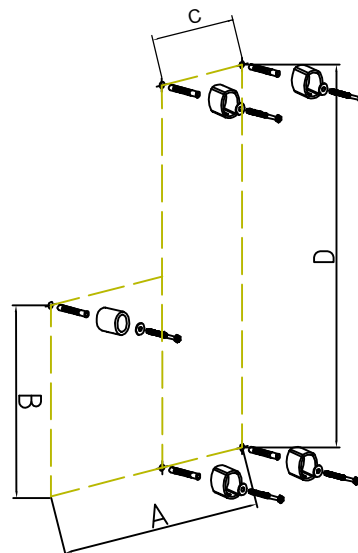
1



2



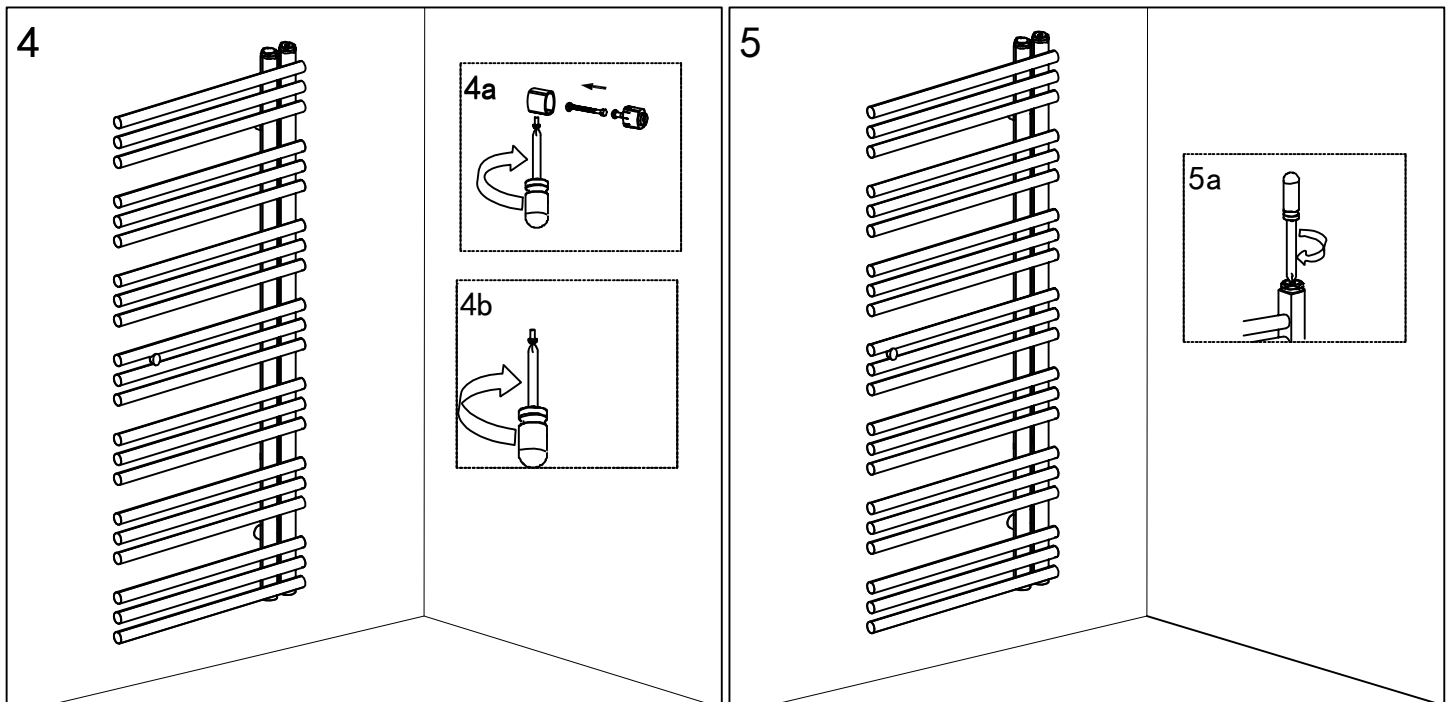
3



Duke Chrome Towel Radiator

Installation Instruction

2-2



When fitting this radiator we recommend a corrosion inhibitor should be present within the heating system in accordance with British standard code of practice BS7593:2006.

After installation ...

- Use a screwdriver to open the air vent and allow any air inside to escape, once water starts to come out of the vent re-tighten and your radiator is ready for use.

Maintenance...

- The outside of the radiator can be cleaned using warm soapy water and a soft damp cloth. Do not use scouring powders or acid based cleaning products as could damage the surface of the radiator.
- If this product is not used for prolonged periods of time it is advised that the radiator should remain filled with fluid to stop any oxidization occurring.
- If the water temperature in the system exceeds 50°C (122°F), please install a warning mark near the towel to avoid being scalded.
- This product should only be used with a maximum pressure of PN ≤1MPa (10Kg/CM², 10Bar). Only for use with water. Maximum temperature t≤100°C (212°F).